



## APARTMENTS T2 - 30M<sup>2</sup>



\* Non-contractual floor plan | Subject to availability  
Prices in rands and US Dollars subject to change according to the exchange rate



- Living space: kitchen, living room, dining room
- 1 bedroom
- 1 separate bathroom
- 1 balcony (For apartments on first and second floors only.  
Indoor garden access for ground and third floor apartments.)

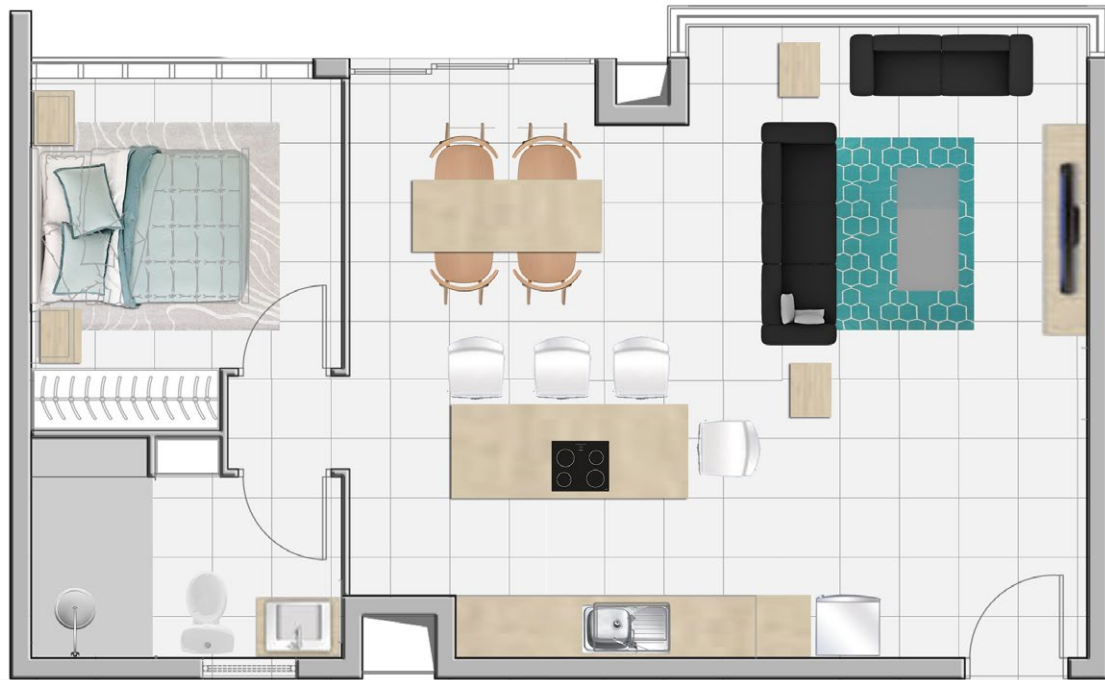
Ground Floor  
**Rs 3,905,000**  
(\$98,500 - R1,700,000)  
+ fees

1st & 2nd floors  
**Rs 4,015,000**  
(\$101,000 - R1,750,000)  
+ fees

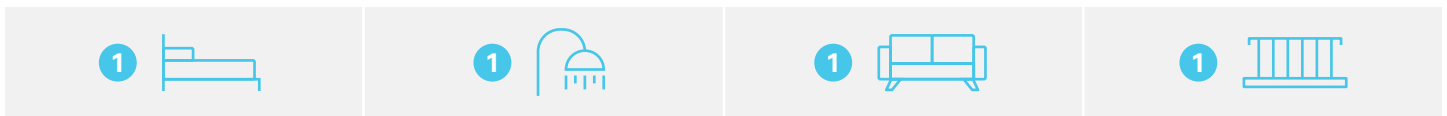
3rd floor  
**Rs 4,125,000**  
(\$103,500 - R1,800,000)  
+ fees



## APARTMENTS T2XL - 60M<sup>2</sup>



\* Non-contractual floor plan | Subject to availability  
Prices in rands and US Dollars subject to change according to the exchange rate



- Living space: kitchen, living room, dining room
- 1 bedroom
- 1 separate bathroom
- 1 balcony (For apartments on first and second floors only.  
Indoor garden access for ground and third floor apartments.)

Ground Floor  
**Rs 6,990,000**  
(\$176,000 - R3,050,000)  
+ fees

1st & 2nd floors  
**Rs 7,015,000**  
(\$101,000 - R3,100,000)  
+ fees



## APARTMENTS T3 - 60M<sup>2</sup>



\* Non-contractual floor plan | Subject to availability  
 Prices in rands and US Dollars subject to change according to the exchange rate

<b>2</b>	<b>1</b>	<b>1</b>	<b>1</b>
----------	----------	----------	----------

- Living space: kitchen, living room, dining room
- Bedroom 1
- Bedroom 2
- 1 separate bathroom
- 1 balcony (For apartments on first and second floors only.  
 Indoor garden access for ground and third floor apartments.)

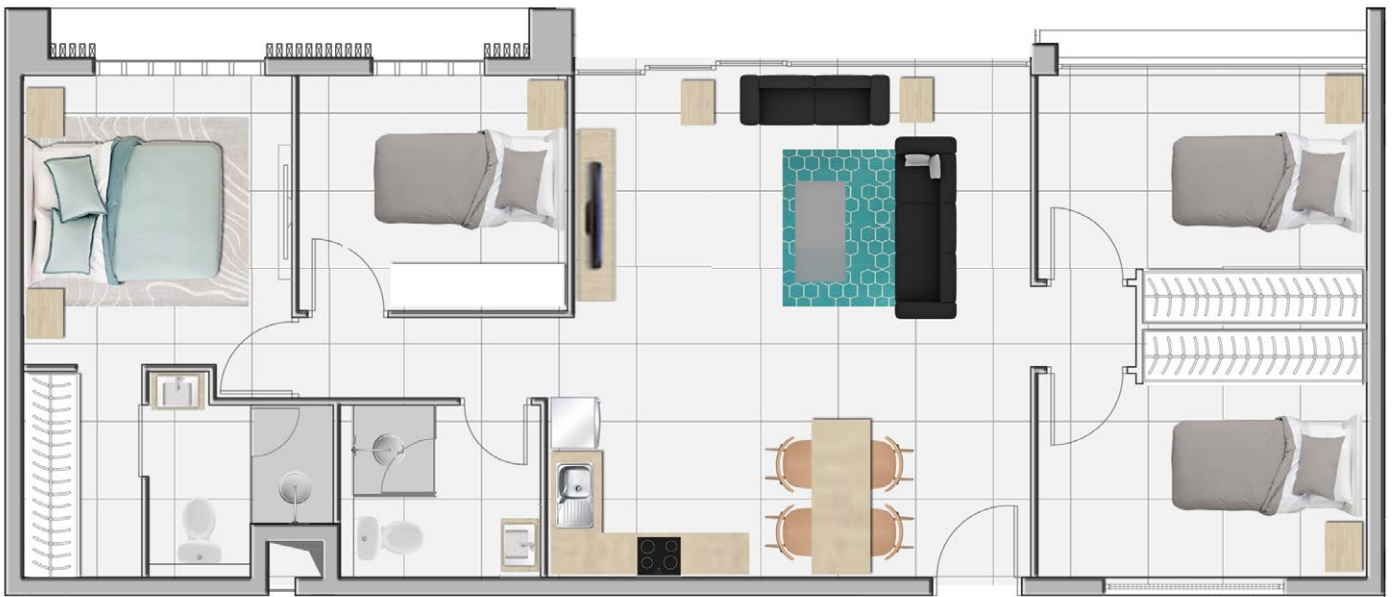
Ground Floor  
**Rs 7,205,000**  
 (\$181,000 - R3,150,000)  
 + fees

1st & 2nd floors  
**Rs 7,315,000**  
 (\$184,000 - R3,200,000)  
 + fees

3rd floor  
**Rs 7,425,000**  
 (\$187,000 - R3,250,000)  
 + fees



## APARTMENTS T5 - 90M<sup>2</sup>



\* Non-contractual floor plan | Subject to availability  
 Prices in rands and US Dollars subject to change according to the exchange rate

4	2	1	1	1
---	---	---	---	---

- Living space: kitchen, living room, dining room
- En-suite bedroom 1
- Dressing
- En-suite bathroom
- Bedroom 2
- Bedroom 3
- Bedroom 4
- 1 separate bathroom
- 1 balcony (For apartments on first and second floors only.  
 Indoor garden access for ground and third floor apartments.)

Ground Floor  
**Rs 10,505,000**  
 (\$264,000- R4,550,000)  
 + fees

1st & 2nd floors  
**Rs 10,615,000**  
 (\$267,000 - R4,600,000)  
 + fees